

TECHNICAL REPORT



Report No.: TW2007344S

File Reference No.: 2020-07-31

Applicant: Dongguan Cstouch Electronic Co., Ltd.

Product: Touch Screen

Model No.: DC1011161, WWX101202, WWX101256,
WWX222-080-V01, WWX255-101-V1,
WWX233-101-V04, WWX236-080-V0, WWX256-101-V2

Brand Name: N/A

Test Conclusions: Based on the verification results of the submitted samples, the test results comply with the limits as set by RoHS Directive 2011/65/EU and its amendment (EU) 2015/863.

Approved By

A handwritten signature in black ink, appearing to read 'Jack Chung'.

Jack Chung

Manager

Dated: 2020-07-31

Test Conclusions appearing herein relate only to the sample tested
The technical reports is issued errors and omissions exempt and is subject to withdrawal at

SHENZHEN TIMEWAY TESTING LABORATORIES

Zone C, 1st Floor, Block B, Jun Xiang Da Building, Zhongshan Park Road West,
Tong Le Village, Nanshan District, Shenzhen, China



1 General Details

1.1 Test Lab Details

Name: SHENZHEN TIMEWAY TESTING LABORATORIES
Address: Zone C, 1st Floor, Block B, Jun Xiang Da Building, Zhongshan Park Road West, Tong Le Village, Nanshan District, Shenzhen, China
Tel: (+86 755)8344 8688
Fax: (+86 755)8344 2996

1.2 Applicant Details

Applicant: Dongguan Cstouch Electronic Co., Ltd.
Address: Room 401, Building 9, Number 1, Huili second street, Fenghuanggang Road, Tangxia town, Dongguan city, China
Tel: --
Fax: --

1.3 Description of EUT

Product: Touch Screen
Manufacturer: Dongguan Cstouch Electronic Co., Ltd.
Address: Room 401, Building 9, Number 1, Huili second street, Fenghuanggang Road, Tangxia town, Dongguan city, China
Basic Model: DC1011161
Additional Model: WWX101202, WWX101256, WWX222-080-V01, WWX255-101-V1, WWX233-101-V04, WWX236-080-V0, WWX256-101-V2
Brand Name: N/A

1.4 Submitted Sample

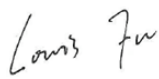
1 samples

1.5 Test Time

2020-07-28 to 2020-07-31

1.6 Test Engineer


The sample tested by



Print Name: Louis Fu

1.7 Verify Engineer

The report verified by



Print Name: Jack Chung



Sample models:

1.8 Possible test case verdicts

1. N.D.= NOT DETECTED (<2ppm)
2. ppm = PART PER MILLION
3. ppm = mg/kg
4. “-“ = Not Regulated

1.9 General remark

The test conclusions presented in this report relate only to the object tested.

SHENZHEN TIMEWAY TESTING LABORATORIES takes no responsibility for any mistakes caused by inaccurate and/or invalid information submitted by the applicant.

This report shall not be reproduced except in full without the written approval of the testing Lab.

The difference between models: The proportions and contents for the material are same.

2. Test Requested and Conclusion

Test according to RoHS (Restriction of Hazardous Substances) directive 2011/65/EU and its amendment (EU) 2015/863 on submitted samples

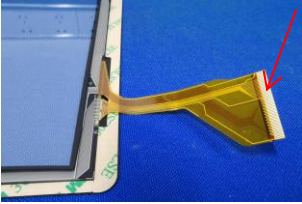
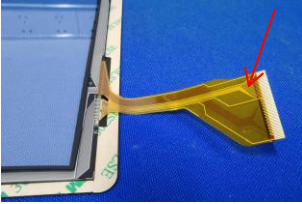




--- Heavy Metal (Pb, Cd, Hg and CrVI) Content	PASS
--- Polybrominated Biphenyls (PBBs) and Polybrominated Diphenyl Ethers (PBDEs) Content	PASS
--- Phthalates (DEHP, BBP, DBP and DIBP) Content	PASS

3. Test Result: Refer to the following page(s)

(The battery was separated approved, not evaluated in this project.)



4. Tested subject Description

Sample Number	Item Name	Tested Material Description	Photo
001	Touch spot	Golden metal	
002	Flexible Flat Cable	Golden material	
003	Double faced adhesive tape	White material	
004	Sealing ring	Black plastic	
005	Silk-screen	White material	
006	Lens	Transparent material	



Test method:

Test Item(s)	Test Method	Equipment	MDL
Pb, Cd, Hg, Cr, Br	IEC 62321-3-1:2013	XRF	5mg/kg
Pb, Cd	IEC 62321-5-1:2013	ICP-OES	2mg/kg
Hg	IEC 62321-4-1:2013	ICP-OES	2mg/kg
Cr ⁶⁺	IEC 62321-7-2:2017	UV-Vis	2mg/kg
	IEC 62321-7-1:2015		010µg/cm ²
PBBs, PBDEs	IEC 62321-6:2015	GC-MS	5mg/kg



For Heavy Metals and Flame Retardants, analyzed by Energy Dispersive X-ray Fluorescence Spectrometers (XRF);
for phthalates, analyzed by Gas Chromatography and Mass Spectrometry (GC-MS).

Sample No.	Total Cadmium	Total Chromium	Total Mercury	Total Lead	Total Bromine	Total Phthalates			
						DEHP	BBP	DBP	DIBP
001	BL	BL	BL	BL	N.A.	N.A.	N.A.	N.A.	N.A.
002	BL	BL	BL	BL	BL	BL	BL	BL	BL
003	BL	BL	BL	BL	BL	BL	BL	BL	BL
004	BL	BL	BL	BL	BL	BL	BL	BL	BL
005	BL	BL	BL	BL	BL	BL	BL	BL	BL
006	BL	BL	BL	BL	BL	BL	BL	BL	BL

Note:

- “BL” denotes below limit
- “OL” denotes over limit
- “N.A.” denotes not applicable



— XRF screening limits in mg/kg for regulated elements in various matrices

ELEMENT	POLYMER		
	BL	INCONCLUSIVE	OL
Cd	$X < (70-3\sigma)$	$(70-3\sigma) < X < (130+3\sigma)$	$X > (130+3\sigma)$
Pb	$X < (700-3\sigma)$	$(700-3\sigma) < X < (1300+3\sigma)$	$X > (1300+3\sigma)$
Hg	$X < (700-3\sigma)$	$(700-3\sigma) < X < (1300+3\sigma)$	$X > (1300+3\sigma)$
Br	$X < (300-3\sigma)$	$X > (300-3\sigma)$	N.A.
Cr	$X < (700-3\sigma)$	$X > (700-3\sigma)$	N.A.

ELEMENT	METAL		
	BL	INCONCLUSIVE	OL
Cd	$X < (70-3\sigma)$	$(70-3\sigma) < X < (130+3\sigma)$	$X > (130+3\sigma)$
Pb	$X < (700-3\sigma)$	$(700-3\sigma) < X < (1300+3\sigma)$	$X > (1300+3\sigma)$
Hg	$X < (700-3\sigma)$	$(700-3\sigma) < X < (1300+3\sigma)$	$X > (1300+3\sigma)$
Cr	$X < (700-3\sigma)$	$X > (700-3\sigma)$	N.A.

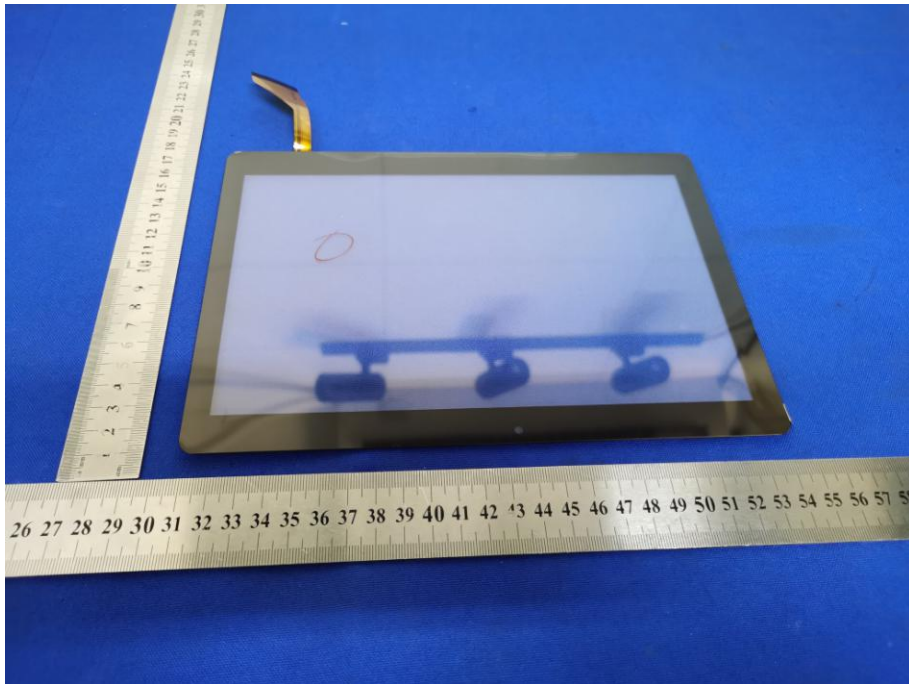
ELEMENT	COMPLEX MATERIAL		
	BL	INCONCLUSIVE	OL
Cd	$X < (50-3\sigma)$	$(50-3\sigma) < X < (150+3\sigma)$	$X > (150+3\sigma)$
Pb	$X < (500-3\sigma)$	$(500-3\sigma) < X < (1500+3\sigma)$	$X > (1500+3\sigma)$
Hg	$X < (500-3\sigma)$	$(500-3\sigma) < X < (1500+3\sigma)$	$X > (1500+3\sigma)$
Br	$X < (250-3\sigma)$	$X > (250-3\sigma)$	N.A.
Cr	$X < (500-3\sigma)$	$X > (500-3\sigma)$	N.A.

- Screening limits in mg/kg for regulated phthalates in various matrices

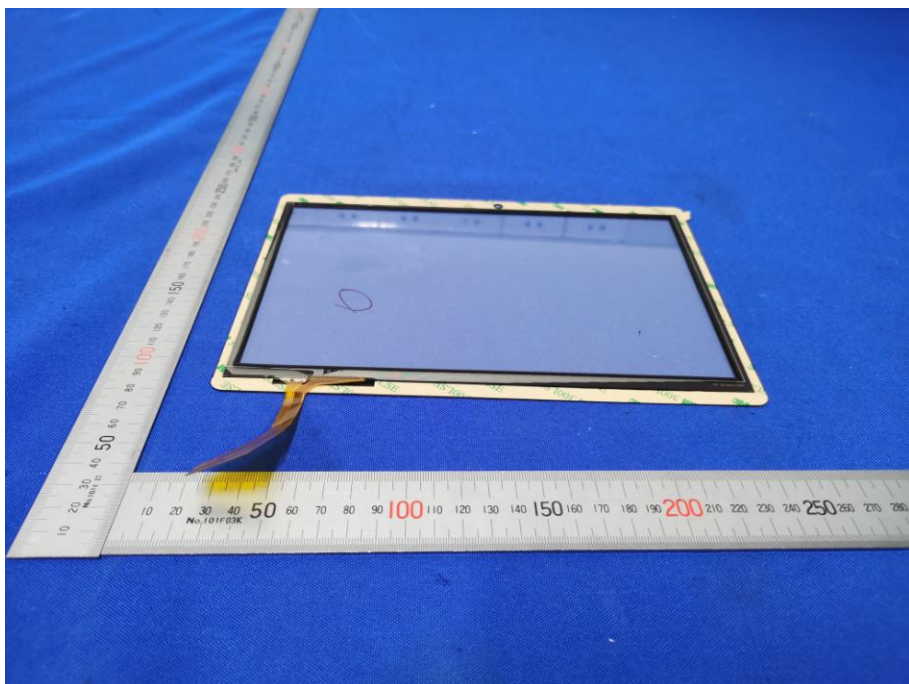
PHTHALATES	BL	INCONCLUSIVE
DEHP	$X < 600$	$X \geq 600$
BBP	$X < 600$	$X \geq 600$
DBP	$X < 600$	$X \geq 600$
DIBP	$X < 600$	$X \geq 600$



6. APPENDIX: Photos of the product



View 1



View 2

-End of the report-